

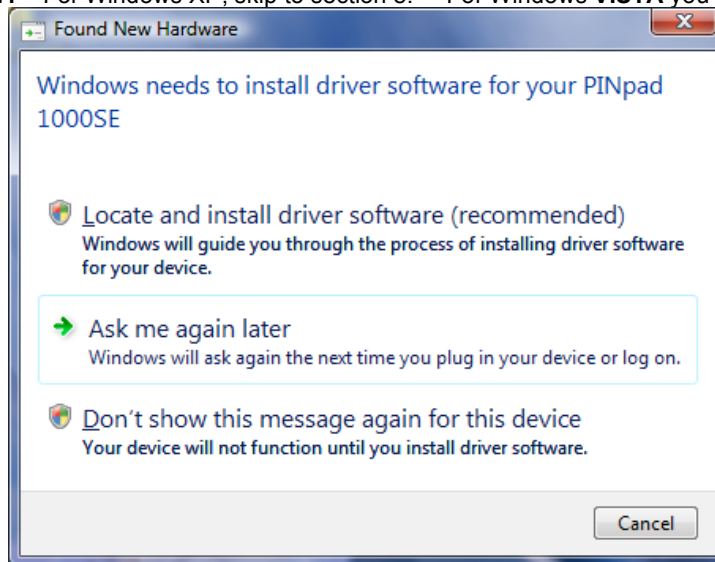
PINpad 1000SE (PCI) USB Cable Installation Instructions

Software Driver Installation

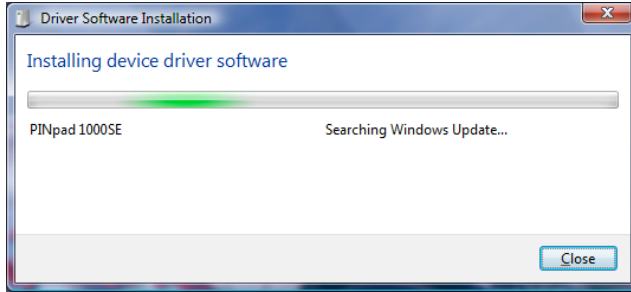
PLEASE NOTE: Follow the instructions carefully for the successful installation of the Verifone 1000se.

Driver Installation

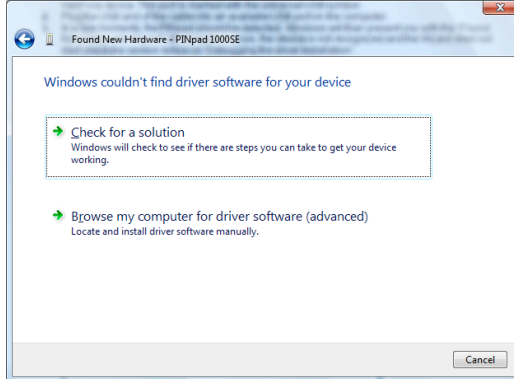
1. Download the Verifone Drive for the Pin Pad 1000se from the SHIPRITE web site.. CLICK HERE >> http://shipritesoftware.com/support/DOWNLOAD/PP1000se_PCI_USB_Driver.zip
2. When you download the zip file, you click SAVE. Browse to DESKTOP and click SAVE. The following file will be saved on your desktop: PP1000se_PCI_USB_Driver.zip.
3. Find the file PP1000se_PCI_USB_Driver.zip on your desktop. Double click on the file name and then EXTRACT to C:\Verifone. If you need to, select both files and then right button click with your mouse. Select COPY. Then navigate to your C: drive. If you do not have a VERIFONE folder, go to the menu above and select FILE: NEW while you are in the C: drive. Then RIGHT click into the folder and select PASTE. The driver will appear there.
4. Connect the 4 pin "phone handset" end of your USB cable into the corresponding connector on the VeriFone device. This port is marked with the universal USB symbol.
5. Plug the USB end of the cable into an available USB port on the computer.
6. In a few moments, the PINpad should be detected. Windows will then present you with the "Found New Hardware Wizard". (If, for some reason, the device is not recognized and the Wizard does not start check the section below on "Debugging the driver installation".
7. For Windows XP, skip to section 8. For Windows **VISTA** you will get this Window:



Click on LOCATE AND INSTALL DRIVER SOFTWARE. You will now get this window:

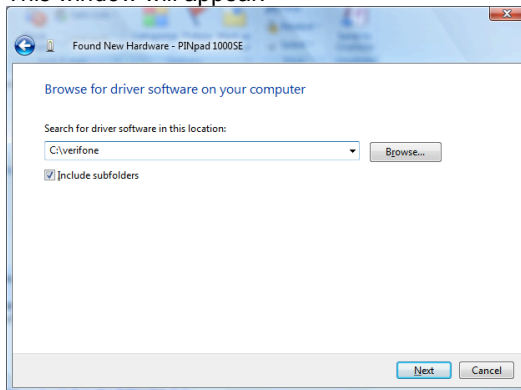


After checking for a minute or so, you will get this Window...



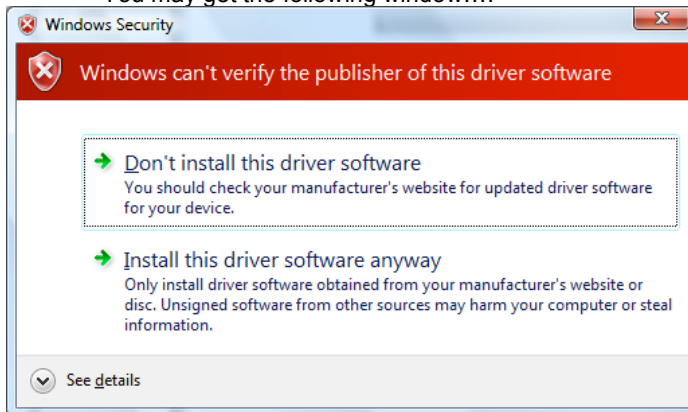
Click on BROWSE MY COMPUTER.

This window will appear:



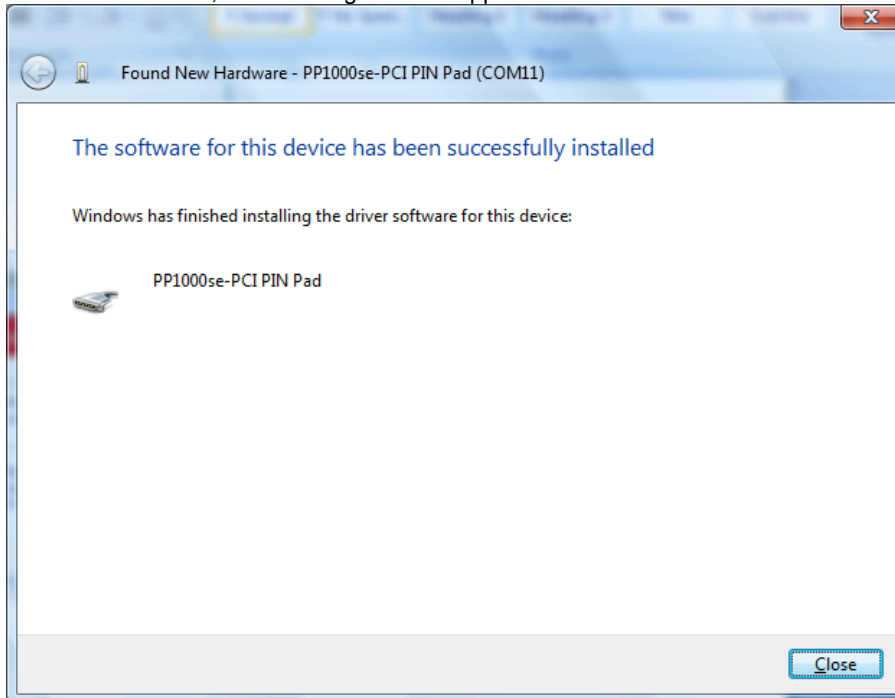
Click NEXT.

You may get the following window....



Click INSTALL THIS DRIVER SOFTWARE ANYWAY.

After a few minutes, the following Window appears:

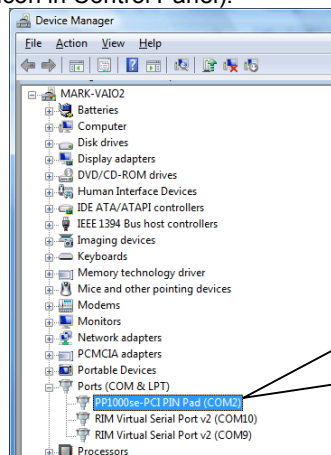


Windows Vista driver is now installed. Proceed to skip the steps 8-13 and proceed to the next section DRIVER CONFIGURATION.

8. For Windows XP, perform steps 8-13. Check the radio button indicating that you want to "Install from a list or specific location" and click NEXT.
9. Check the radio button indicating "Don't search. I will choose the driver..." and click NEXT.
10. Click the "Have Disk" button and "Browse" to the C:\verifone, where you placed the .INF file extracted from the .ZIP in the section above.
11. Select the file "**verifone_PP1000SE usb-uart.inf**" to OPEN then click OK.
12. At this point you may get warnings that "This driver is not digitally signed" and/or "has not passed Windows Logo testing". Just ignore it and click NEXT and "**Continue Anyway**".
13. Finally, click "Finish" and your driver should now be installed and functional.

Driver Configuration

1. Once you've installed the driver, you may set the assigned Serial Port (COMx) number and operating parameters by using the Windows Device Manager (usually accessed via the System Icon in Control Panel).



In our example, we are using COM2 for the Verifone location. Generally, you should use COM ports 1-5. The procedure for changing is described below. Generally, you should use COM Ports COM1 to COM5.

2. Click on the "Ports (COM & LPT)" entry and expand the list of ports by clicking on the "+" symbol.

3. Right-Click on the COMx entry (newly added since installing your driver), then click "**Properties**" in the drop-down menu.
4. Click on the "**Port Settings**" tab. The default Baud Rate and Protocol settings can be changed here.
5. Click on the "**Advanced**" button. The COM Port number can be set to something that may be more to your liking. (Make sure it is not a COM port that is already in use on the PC/ECR).VeriFone recommends leaving the FIFO settings at their installed default values
6. You are now ready to tell your ShipRite or Smart Swiper what COMM PORT your pin pad is installed on.

Debugging the driver installation

1. In the event the PINpad is unrecognized and the New Hardware wizard does not start, you may correct this by selecting "Add Hardware" from the Windows Control Panel. Once the Add Hardware Wizard starts, select NEXT.
2. Click the radio button indicating that "Yes, I have already connected the hardware".
3. Select "**Add a new hardware device**" from the bottom of the list of available devices and click NEXT.
4. Click the radio button to indicate "**Install the hardware that I manually select from a list**" and click NEXT.
5. Select "**Show all devices**" and click NEXT.
6. Click on "**Have Disk**" and "Browse" to the file "**verifone_PP1000SE usb-uart.inf**" that was extracted from the .ZIP above.
7. Select "**Communications Port**" and click NEXT twice.
8. You may get warnings that "This driver is not digitally signed" and/or "has not passed Windows Logo testing" at this point. Just ignore it and click NEXT and "**Continue Anyway**".
9. Finally, click "Finish" and your driver will now be installed and functional.